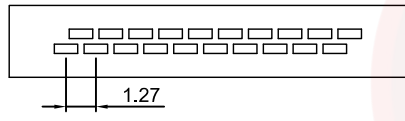
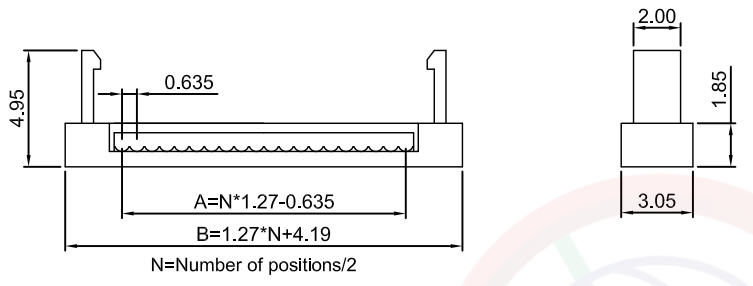
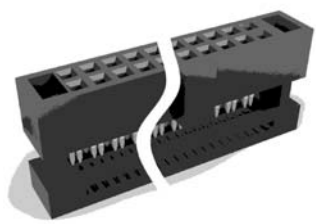
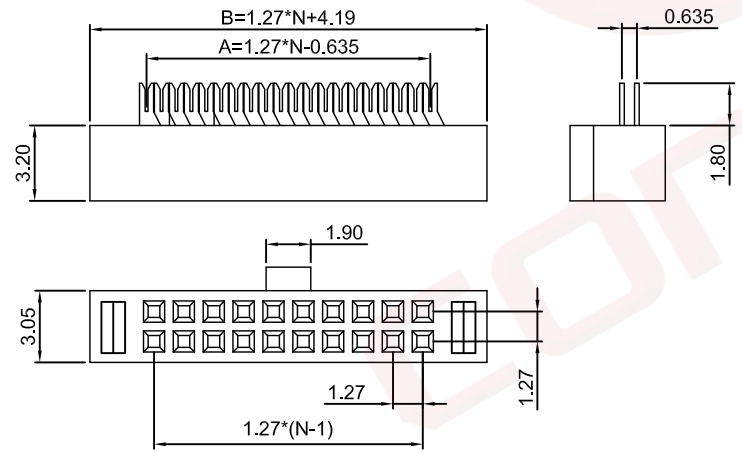


The information provided herein is from CONNELY Electronic Co., Ltd. and is confidential. Any disclosure to a party other than the recipient is prohibited. The intellectual properties and its rights contained herein, including but not limited to, trademarks, patents, copyrights, trade secrets, and technical know-how, are owned exclusively by CONNELY or its affiliates. Unauthorized use of this information in any format or manner. CONNELY may enforce its intellectual property rights at its own discretion; failures or delays to exercise such rights does not constitute a waiver of such rights.

Cover



Housing



(Series Image-Reference Only)

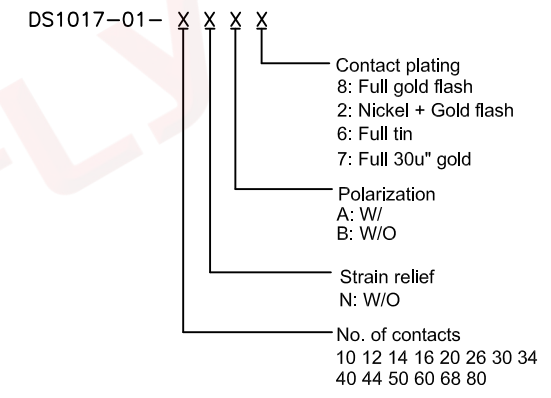
REV.	DESCRIPTION	DRAWN	CHECKED	APPROVED
A	NEW RELEASE	LJH 04/27/05'		LJC 04/27/05'
B	DRAWING UPDATE	JLZ 08/28/18'		

NOTES:

- Materials
 - Insulator: Thermoplastic(UL 94V-0).
 - Contact: Copper alloy.
- Specification
 - Temperature range: -40°C~+105°C.
 - Contact resistance: 20mΩ max.
 - Insulation resistance: 1000MΩ min.
 - Dielectric withstanding voltage: AC 500V per minute.

3. Packing: PVC Tray.

4. Product number code:



GENERAL TOLERANCE		ANGLE TOLERANCE	
X.	±0.60	X.	±5°
.X	±0.38	.X	±3°
.XX	±0.25	.XX	±2°

PROJECTION		TITLE	IDC SOCKET PITCH 1.27mm
UNITS	mm		WITH 0.635mm FLAT CABLE
SHEET SIZE	A4	SERIES	DS1017-01 SERIES

DRAWING TYPE	CUSTOMER		
SCALE	1:1	SHEET	1 OF 1
DRAWING NO.	C-DS1017-01-XXXX-B		

