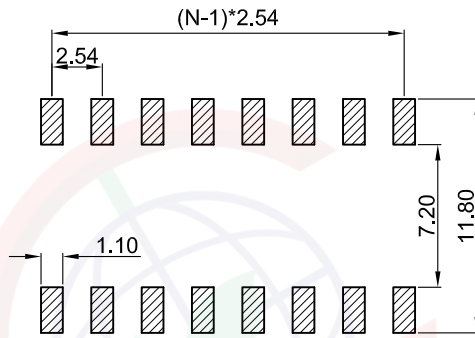
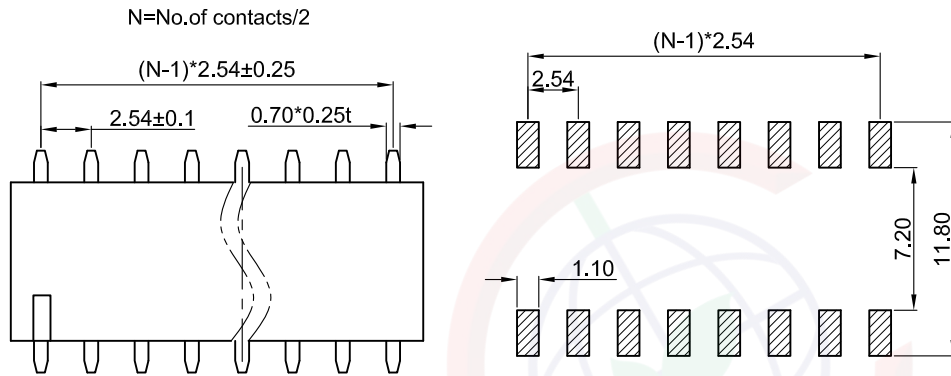


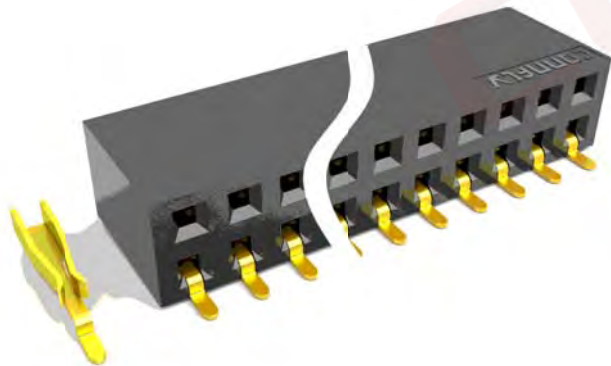
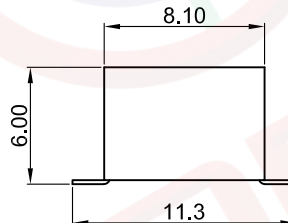
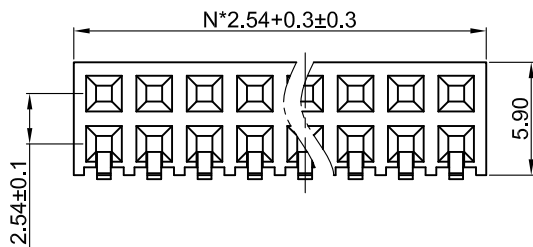
Dept
Qty
DC 1
ED 1
IE 1
ISO 1
PD 1
R&D 1
SD 1
QA 1
QC 1
QF 1

The information provided herein is from CONNELY Electronic Co., Ltd. and is confidential. Any disclosure to a party other than the recipient is prohibited. The intellectual properties and its rights contained herein, including but not limited to, trademarks, patents, copyrights, trade secrets, and technical know-how, are owned exclusively by CONNELY or its affiliates. Unauthorized use of this information in any format or manner. CONNELY may enforce its intellectual property rights at its own discretion; failures or delays to exercise such rights does not constitute a waiver of such rights.

REV.	DESCRIPTION	DRAWN	CHECKED	APPROVED
A	NEW RELEASE	YCH 10/22/09'	~	LJC 10/22/09'
B	DRAWING UPDATE	JLZ 07/24/20'	~	
C	DRAWING UPDATE	JLZ 11/15/23'	~	



Recommend PCB layout
(Tolerance:±0.05)



(Series Image-Reference Only)

Notes:

Specifications:

1. Contact Resistance: 20mΩ Max.
2. Insulation Resistance: 1000MΩ Min.
3. Dielectric Withstanding Voltage: 600V AC(rms) For 1 Minute.
4. Current Rating:3A.
5. Temperature: -40°C~+105°C.


Materials:

1. Contact Material: Copper Alloy.
2. Contact Plating: Gold Plating Over Nickel.
3. Insulator Material: High temp,Black,UL94-V0.

Product Number Code:

DS1024-06 - X X X X X

- Packing type
R: Tape on reel
B: Tube
- Housing color
B: Black
- Contact plating
8: Full gold flash
- Connector type
S:Socket
- No.of contacts
2x2-2x40

GENERAL TOLERANCE		ANGLE TOLERANCE		PROJECTION	⊕	TITLE
X.	±0.60	X.	±5°	UNITS	mm	2.54mm Female Header Horizontal SMT Type
.X	±0.38	.X	±3°	SHEET SIZE	A4	SERIES DS1024-06 SERIES
.XX	±0.25	.XX	±2°			
DRAWING TYPE		CUSTOMER		 晨翔电子有限公司 CONNELY CONNELY ELECTRONIC CO. LTD		
SCALE		1:1 SHEET 1 OF 1				
DRAWING NO.		C-DS1024-06-XXXXX-C				