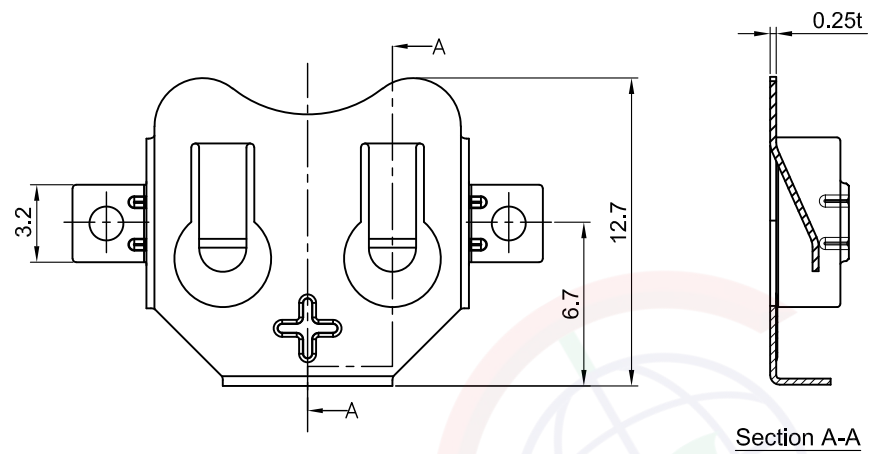


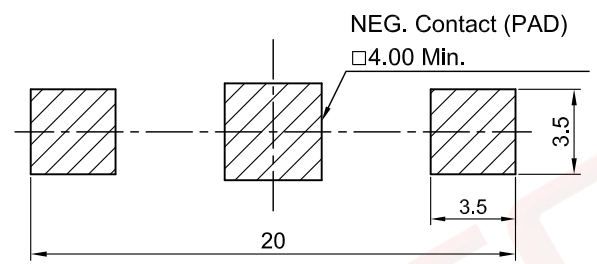
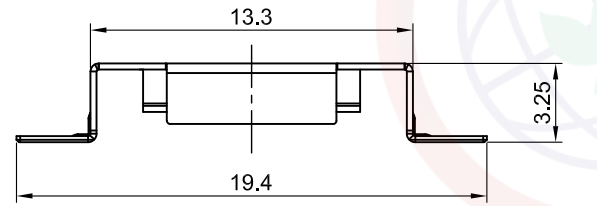
The information provided herein is from CONNELY Electronic Co., Ltd. and is confidential. Any disclosure to a party other than the recipient is prohibited. The intellectual properties and its rights contained herein, including but not limited to, trademarks, patents, copyrights, trade secrets, and technical know-how, are owned exclusively by CONNELY or its affiliates. Unauthorized use of this information in any format or manner. CONNELY may enforce its intellectual property rights at its own discretion; failures or delays to exercise such rights does not constitute a waiver of such rights.

1 2 3 4 5 6 7 8

REV.	DESCRIPTION	DRAWN	CHECKED	APPROVED
A	NEW RELEASE	JLZ 11/17/15'	HZW 11/17/15'	LJC 11/17/15'
B	DRAWING UPDATE	JLZ 10/18/19'	~	
C	DRAWING UPDATE	JLZ 01/16/25'	~	



Section A-A



Mounting PAD layout



(Series Image-Reference Only)

NOTE:

- Material: Phosphor bronze.
 - Part Number Code:
DS1092-20 - X X X X
- Picking type:
R: Tape on reel
P: Ploybag
 - Contact plating:
N: Nickel
 - Thickness:
0250: 0.25mm
 - Material:
PB: Phosphor bronze

GENERAL TOLERANCE		ANGLE TOLERANCE	
X.	± 0.60	X.	$\pm 5^\circ$
.X	± 0.38	.X	$\pm 3^\circ$
.XX	± 0.25	.XX	$\pm 2^\circ$

PROJECTION		TITLE	CR1220~1225 Battery Holder
UNITS	mm	SHEET	1 OF 1
SHEET SIZE	A4	SERIES	DS1092-20 SERIES

晨翔电子有限公司
CONNELY CONNELY ELECTRONIC CO. LTD

1 2 3 4 5 6 7 8